

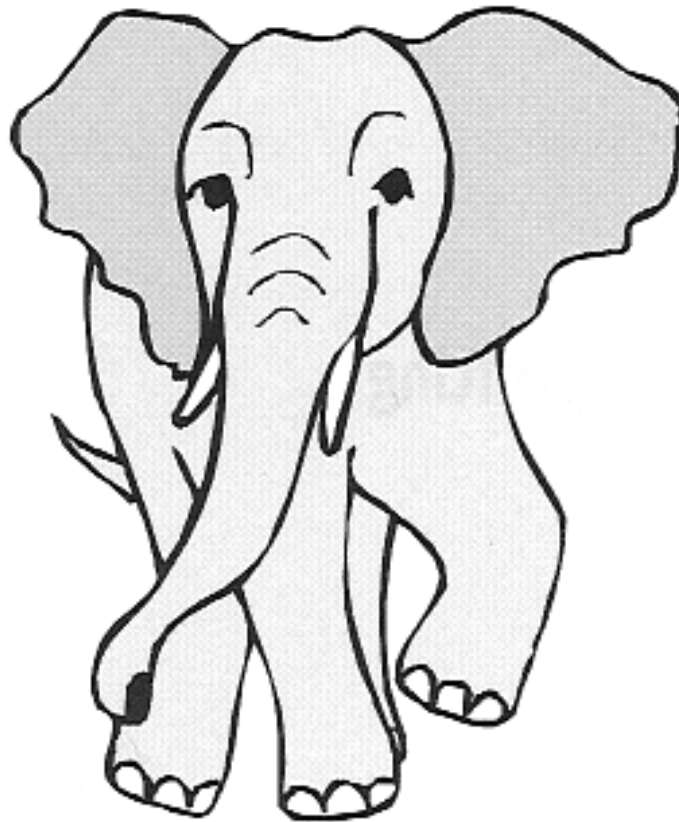
# **Donkey**

***Very stubborn and refuses to change  
his or her point of view.***



# Elephant

*Blocks the way, and stubbornly prevents the group from continuing along the road they desire to go.*



# Lion

***Gets in and fights whenever others disagree with his or her plans, or interfere with his or her desires.***



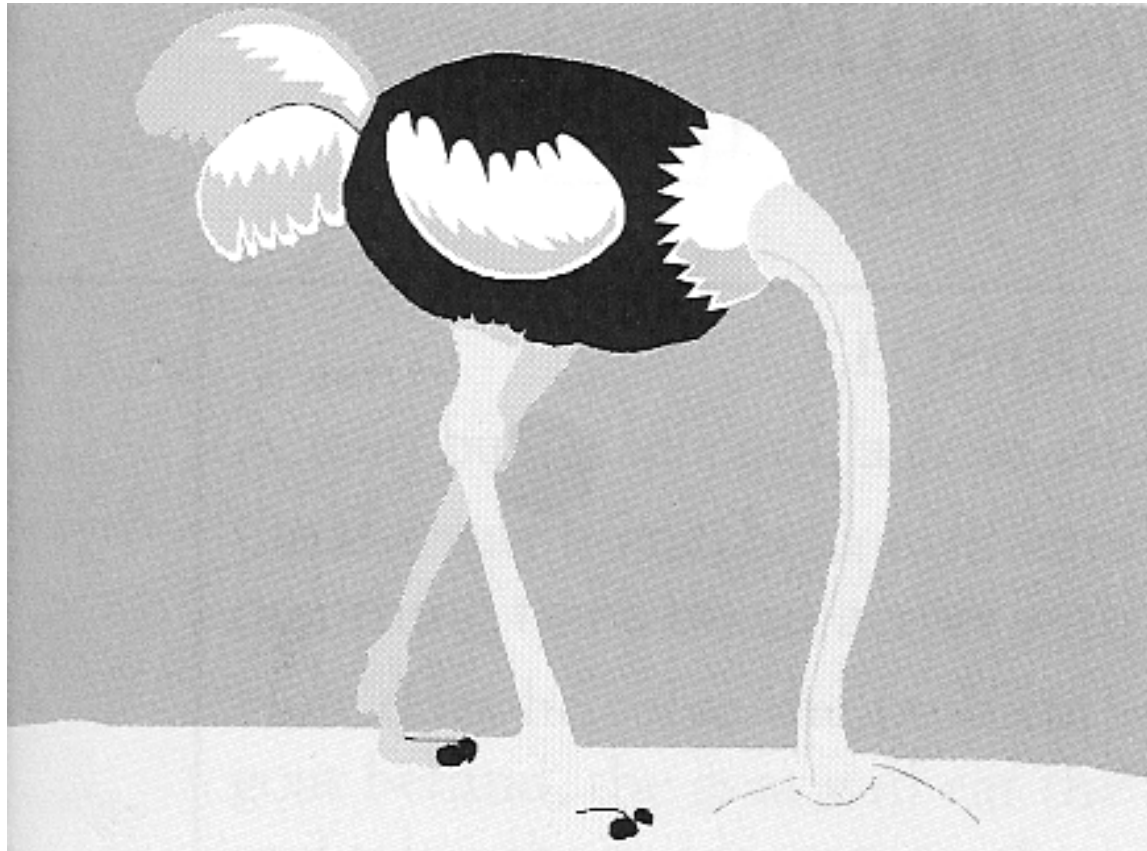
# Rabbit

*Runs away as soon as he or she senses tension, conflict, or any unpleasant job. This may mean switching quickly to another topic (flight behaviour).*



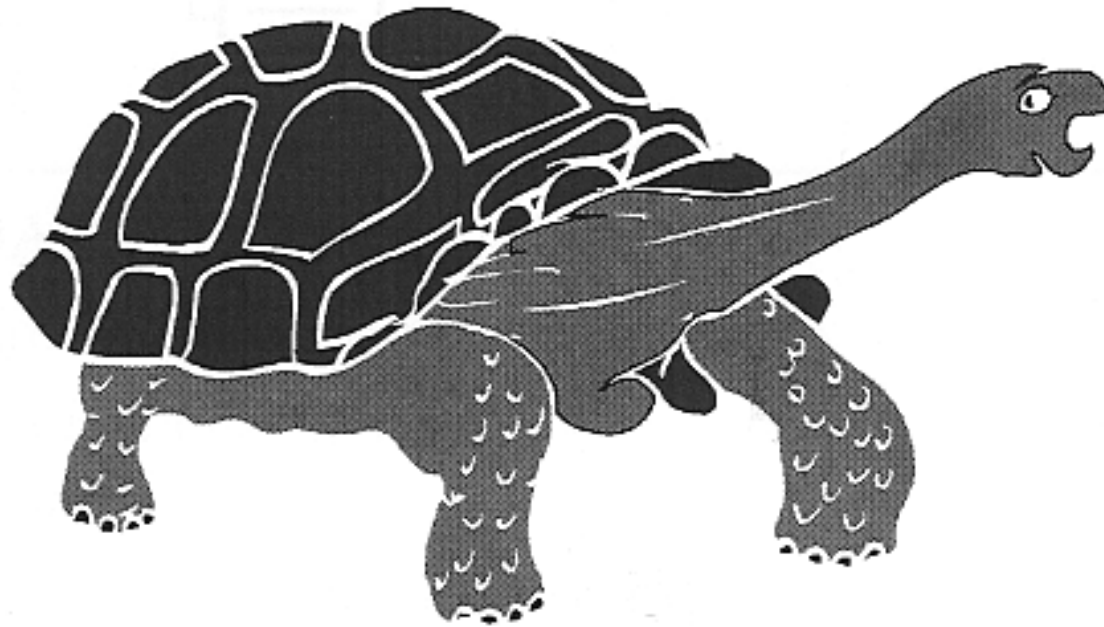
# Ostrich

***Buries his or her head in the sand and refuses to face reality or admit there is any problem at all.***



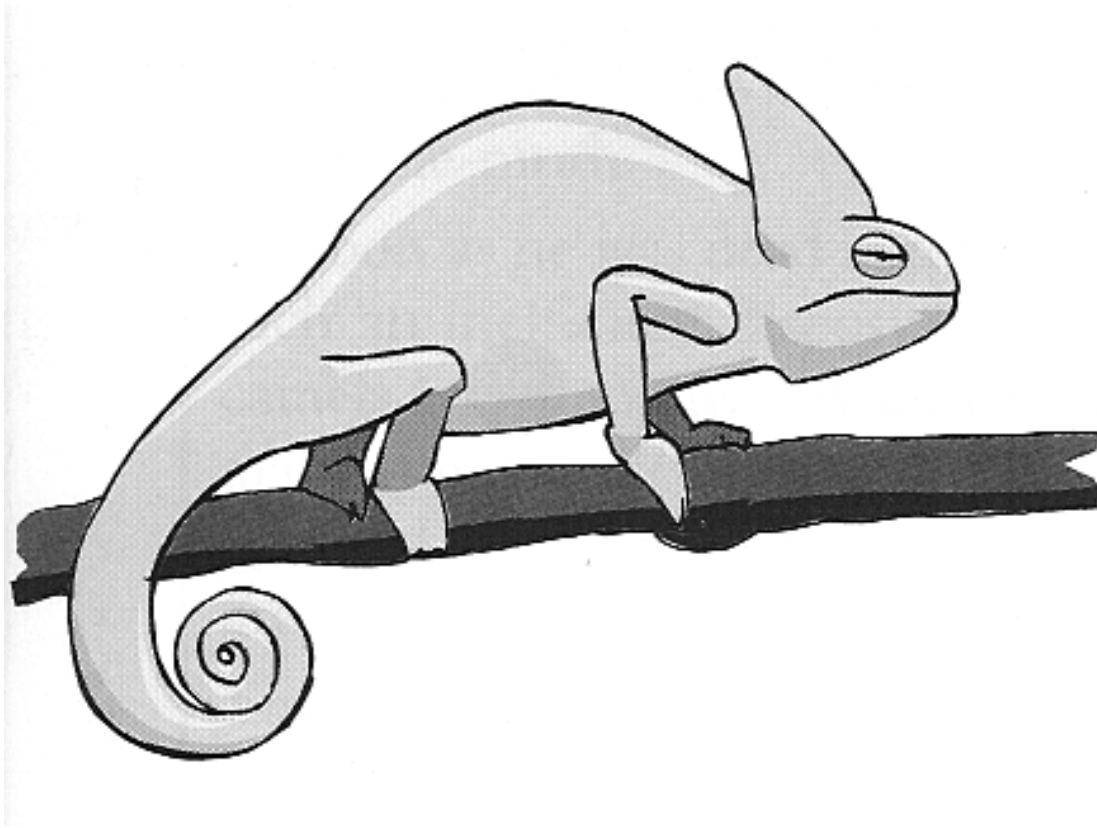
# **Turtle**

***Withdraws from the group,  
refusing to give ideas or opinions.***



# Chameleon

*Changes colour according to the people he or she is with.  
Will say one thing to this group and something else to  
another.*



# Owl

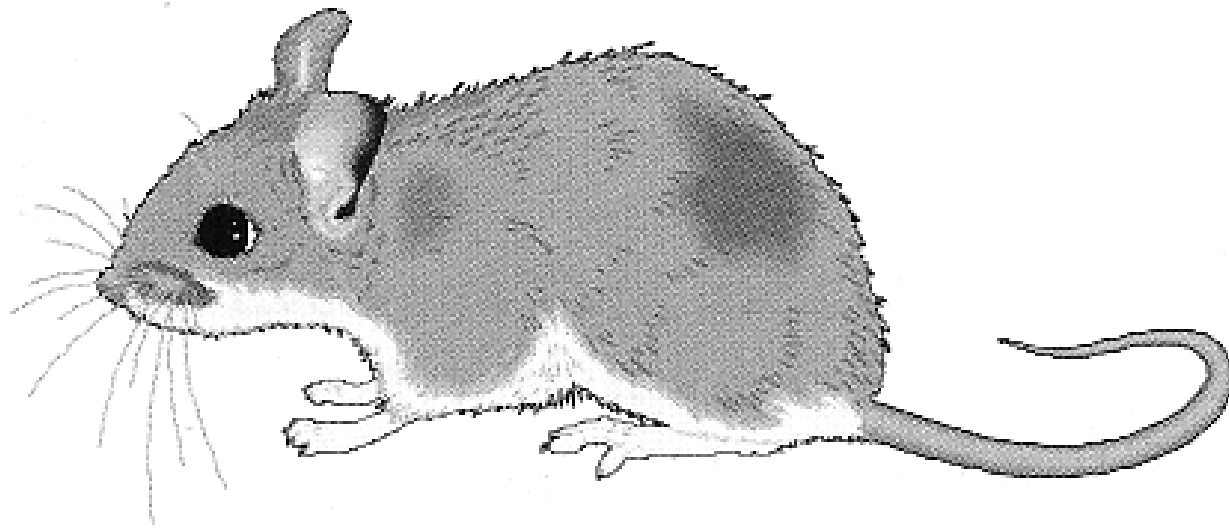
***Looks very solemn and pretends to be very wise, always talking in long words and complicated sentences.***





# Mouse

*Too timid to speak up on any subject.*



# **Monkey**

***Fools around, chatters, and prevents the group from concentrating on serious business.***

